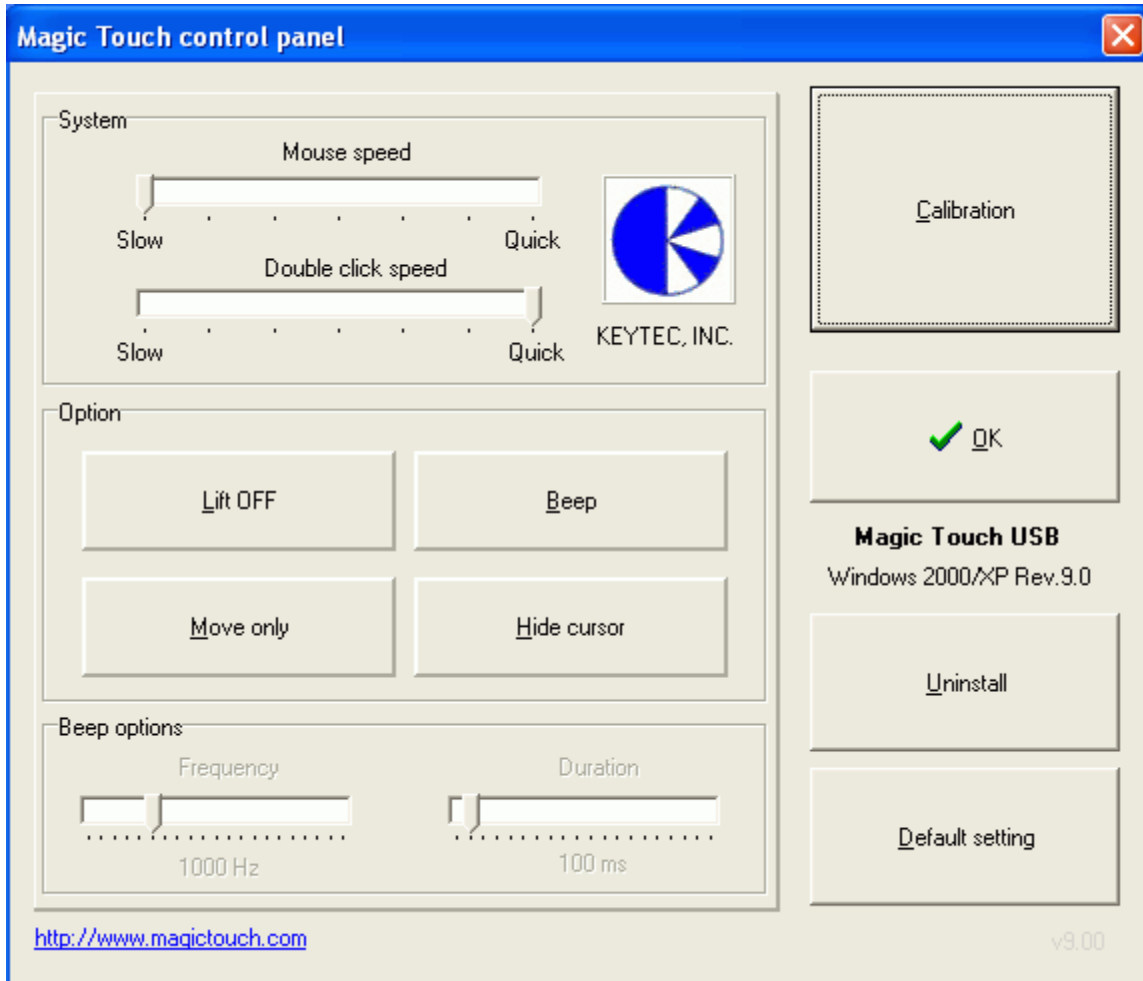


Multi Monitor Driver Calibration Example for Dual View Mode

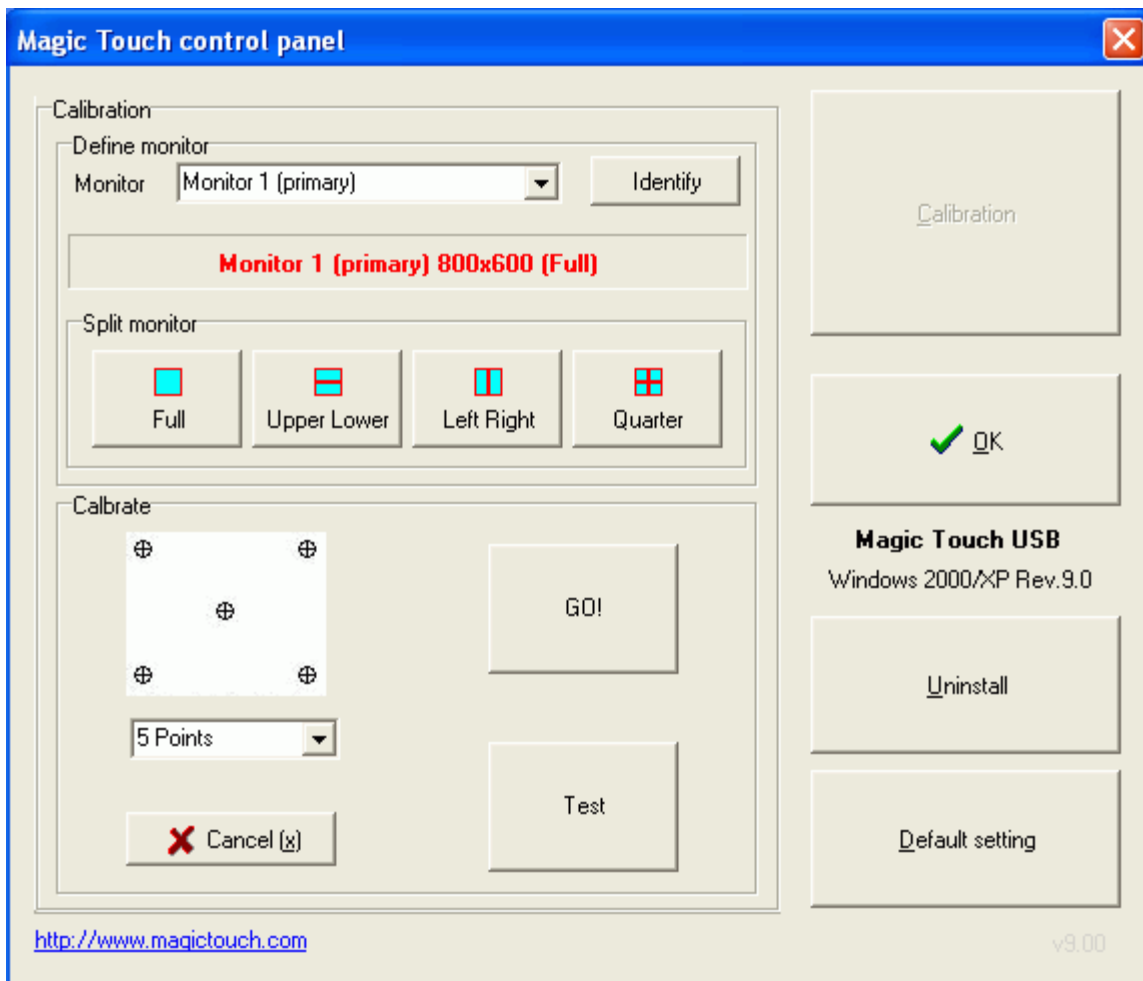
Date: 2006/8/25

1. Main menu of touch screen control panel



(Figure 1)

2. Calibration Menu



(Figure 2)

This menu consists of three sections: Define monitor, Split monitor, and Calibrate.

2.1 Define Monitor – Allows you to select the specific monitor you wish to calibrate. When selected from the drop-down menu, the monitor’s information will appear in red below the drop-down.

2.1.1 Identify – Clicking on identify will display the monitor’s number over the monitor’s image.

2.2 Split monitor – Allows you to set the type of span your monitors are displaying.

2.2.1 Full – (*default*) When each monitor displays a separate desktop (one background image each). This is the most common mode.

2.2.2 Upper Lower (for span mode) – When two monitors share a desktop, and one monitor is positioned above the other.

2.2.3 Left Right (for span mode) – When two monitors share a desktop and one is positioned next to the other.

2.2.4 Quarter (for span mode) – When four monitors are used to display one desktop, with each monitor one quadrant of the desktop.

2.3 Calibrate – Allows you select the type of calibration you wish to perform and/or test the calibration. Select either a 5 point calibration (default) or ultra-fine 25 point calibration. Click “GO!” to calibrate after selecting 5 or 25 points. Use the stylus to touch for a few seconds the center of each of the successive concentric circles that appear.

3. Example

3.1. Three desktops in windows XP



(Figure 3)

3.2. Calibration identify: From the calibration menu click identify button. Each monitor’s identity number will appear as shown in the following.



(Figure 4)

3.3. How to calibrate

Step 1 Select monitor identity number

Step 2 Select split type (It depends on VGA card setting) In this example: Monitor 1 split mode is full.

Step 3 Select number of calibration points, then click GO to start calibration. Touch each point with the stylus provided.



(Figure 5)

3.4. Repeat the above-mentioned 3 steps to calibrate each monitor that has touch screen installed on.

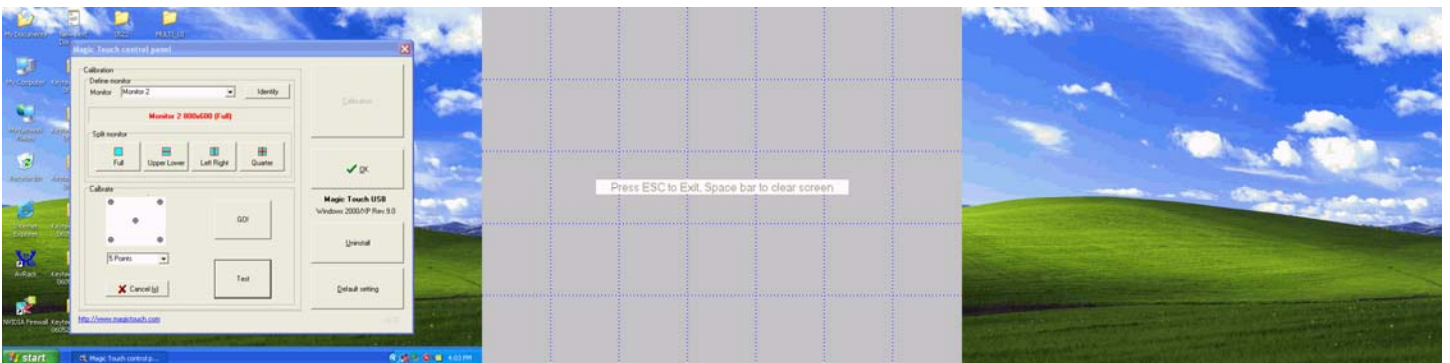


(Figure 6)



(Figure 7)

3.5. After calibration is completed, touch each screen to check the accuracy, or click the test button on calibration menu to run the testing program. Repeat the calibration steps if the touch position is not accurate to within 3 mm tolerance.



(Figure 8)