



**4K**  
ULTRA HD

4K / 3840 x 2160 Resolution / PCAP Touch

# I32ZI-OD-45P0

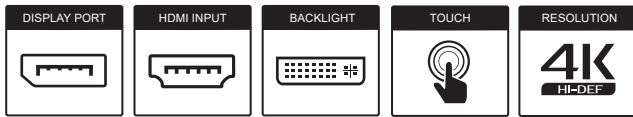
## LARGE FORMAT



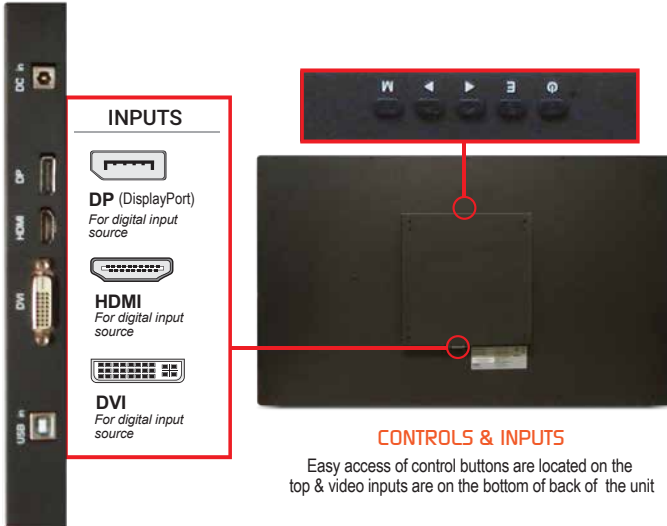
Technological advances and price decreases have increased the market for large 4k touch screen displays substantially. These innovative designs, comprised of 4k 32" displays and above, are creating opportunities in digital signage, corporate webinars and infotainment. Feel free to inquire about our large touch screen LCDs or engage us with your latest solution project and let our engineers position you for something big.



## 4K UHD / 32 INCH TOUCH DISPLAY MONITOR



### INTERFACE & OSD



### FEATURES

- 4K, 32 Inch, 3840 x 2160 Resolution
- 10 Points PCAP Touch
- LED Backlight Unit
- Water and Dust Resistant
- Support HDMI, DVI, and Display Port Inputs

### SPECIFICATIONS

<b>DISPLAY</b> I32ZI-OD-45PO	
Screen Size	32 In
Resolution	3840 x 2160
Backlight	LED
Aspect Ratio	16 : 9
Viewing Angle	178° / 178°
Response Time	9.5ms
Brightness	350cd/m <sup>2</sup>
Contrast Ratio	3000 : 1
Color Depth	16.7 M
<b>OPS SLOT</b>	
OPS Module Slot	N/A
<b>INTERFACE</b>	
HDMI	1
Display Port	1
DVI	1
<b>TOUCH TECHNOLOGY</b>	
Material (Glass)	3mm Strengthen Glass
Type	Projected Capacitive (PCAP)
Points	10 MAX (Dependant on OS / Browser / Software)
Accuracy	2mm
Touch Response Time	10ms (typ)
Surface Durability	Mohs' 7H
Touch Activation Force	10g
Light Transmission	86%
Interface	USB (B-Type)
<b>CABINET</b>	
Material	Metal
<b>POWER</b>	
Input Voltage	12V DC +/- 5%
Electrical Ratings	AC 100V ~ 240V, 50/60Hz
<b>TEMPERATURE</b>	
Operating	32° F ~ 104° F (0° C ~ 40° C)
<b>DIMENSIONS (WxHxD)</b>	
Inch (in)	29.5 x 17.8 x 2.2
Millimeter (mm)	750.4 x 452.7 x 56.5
<b>WEIGHT</b>	
Net Weight	30.8 lbs (14 kg)
<b>VESA™</b>	
Mount Size (mm)	200 x 200

Specifications subject to change without any notice

### DIMENSION

