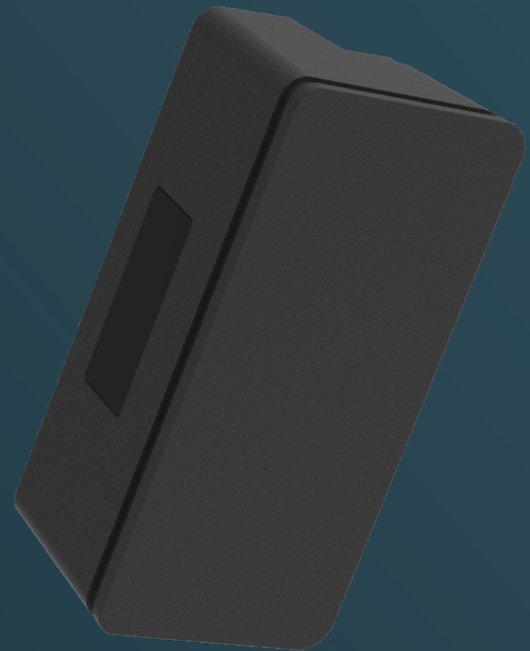


2D BARCODE SCANNER

 ATTACH,  CONFIGURE,  TRANSACT

With its family of Micro USB-attached accessories, TREK can be instantly transformed for any customer touchpoint. Three strategically positioned ports along the display bezel allow for secure attachment of accessories to create a multitude of solutions that empower transactions.

Powered by the Honeywell 6600SR scan engine, the TREK 2D Barcode Scanner provides rich support for 1D, 2D, and OCR symbologies. Perfect for creating user-friendly self-service and customer engagement solutions, the TREK 2D Barcode Scanner seamlessly adds functionality and interactivity to the TREK.



AT A GLANCE



Three-Year
Warranty



Android and
Windows OS
Support



Multiple
Mounting
Options

AVAILABLE MODELS

Description	Part Number
2D SCANNER FOR TREK TERMINAL	938PW010100002

Specifications	Details
Color	Black
Input Connector Type	Micro USB
Power Consumption (Typical)	375 mA, 150 μ A (sleep)
Compatibility	TREK 21.5" TREK 15.6"
Barcode Engine	Honeywell 6600SR
Supported Terminal Modes	USB HID, USB KB, USB Serial (CDC), IBM SurePos
Standard Configuration	Presentation Mode
Resolution	844 x 640
Illumination & Aiming	White LED with visible green AIM LED
Ideal Scan Distance	28 mm to 419 mm, depending on barcode symbology, quality, and environment
Viewing Angle	360°, pitch: $\pm 45^\circ$, skew: $\pm 60^\circ$
Beeper Support	Yes
Supported Symbologies	<p>Linear: UPC/EAN/JAN, GS1 DataBar, Code 39, Code 128, Code 32, Code 93, Codabar/NW7, Interleaved 2 of 5, Code 2 of 5, Matrix 2 of 5, MSI, Telepen, Trioptic, China Post</p> <p>2D Stacked: PDF417, MicroPDF417, GS1 Composite</p> <p>2D Matrix: Aztec Code, Data Matrix, QR Code, Micro QR Code, MaxiCode, Han Xin Cod</p> <p>Postal: Intelligent Mail Barcode, Postal-4i, Australian Post, British Post, Canadian Post, Japanese Post, Netherlands (KIX) Post, Postnet, Planet Code</p> <p>OCR Option: OCR-A, OCR-B, E13B (MICR)</p>
SDK / Drivers	Native Windows (no driver required), Android SDK
Supported Operating Systems	Windows 10, Windows 11, Android, ChromeOS Flex
MTBF	2,200,000 Hours
Dimensions	85 mm x 35 mm x 42 mm
Shipping Box Dimensions	130 mm x 112 mm x 56 mm
Weight (Unpackaged)	0.04 kg
Weight (Packaged)	0.09 kg
Operating Temperature	-25° C to 50° C
Storage Temperature	-40° C to 85° C
Humidity	0% to 95% RH, non-condensing at 50° C [122° F]
Warranty	3 Years
What's in the Box	2D Scanner, 2x mounting screws



Explore our full product lineup at custom.biz, or connect with our team to configure the right setup for your business by emailing info@custom.biz.