



EP-125KL66

Features:

- Extra wide cash drawer with 6-coin/6-bill insert
- All steel construction, with stainless steel front
- Black or off-white powder coated finish
- Manual release key-lock at right front
- Stainless steel money clips
- Compulsory switch
- Bell and hammer

Specifications:

- Dimensions: 22.5" (W) x 19.7" (L) x 4.59" (H)*
* 4.18" (H) without rubber feet
- Ship Weight: Approx. 34 lbs (15.4kg)
- 2 year warranty
- Drawer release solenoid 12v or 24v
- Available wired for any receipt printer, ECR/POS system, or computer interface

Available Interfaces:

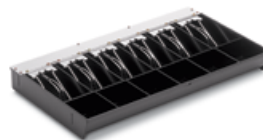
- Receipt Printer Interface

Available Money Trays:

- 6-bill; 6-coin (standard)
P/N 73041-066

Options:

- Optional Locking Lid
P/N 73041-066C



**6 coin/6 bill standard
money tray insert**

EP-125KL66

M-S Cash Drawer Corporate Headquarters

2085 East Foothill Blvd, Pasadena, CA 91107

<http://www.ms cashdrawer.com>

sales@ms cashdrawer.com

Toll-free: 800-544-1749

Fax: 626-792-2111

M-S Canada T: 866-997-9912

