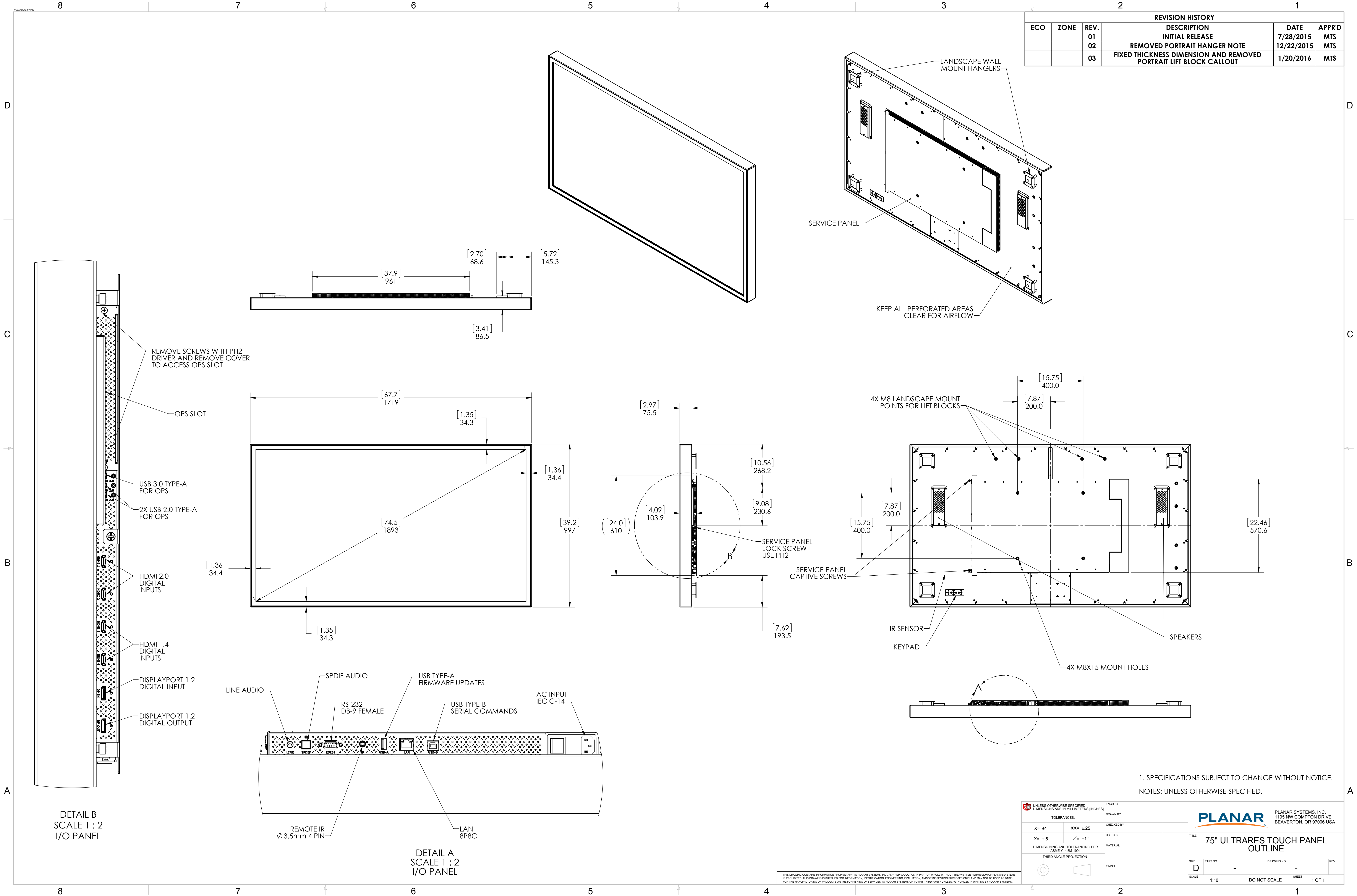


REVISION HISTORY					
ECO	ZONE	REV.	DESCRIPTION	DATE	APPR'D
		01	INITIAL RELEASE	7/28/2015	MTS
		02	REMOVED PORTRAIT HANGER NOTE	12/22/2015	MTS
		03	FIXED THICKNESS DIMENSION AND REMOVED PORTRAIT LIFT BLOCK CALLOUT	1/20/2016	MTS



REMOVE SCREWS WITH PH2 DRIVER AND REMOVE COVER TO ACCESS OPS SLOT

OPS SLOT

USB 3.0 TYPE-A FOR OPS

2X USB 2.0 TYPE-A FOR OPS

HDMI 2.0 DIGITAL INPUTS

HDMI 1.4 DIGITAL INPUTS

DISPLAYPORT 1.2 DIGITAL INPUT

DISPLAYPORT 1.2 DIGITAL OUTPUT

LINE AUDIO

SPDIF AUDIO

RS-232 DB-9 FEMALE

USB TYPE-A FIRMWARE UPDATES

USB TYPE-B SERIAL COMMANDS

LAN 8P8C

AC INPUT IEC C-14

REMOTE IR Ø 3.5mm 4 PIN

DETAIL B
SCALE 1 : 2
I/O PANEL

DETAIL A
SCALE 1 : 2
I/O PANEL

4X M8 LANDSCAPE MOUNT POINTS FOR LIFT BLOCKS

SERVICE PANEL CAPTIVE SCREWS

IR SENSOR
KEYPAD

SPEAKERS

4X M8X15 MOUNT HOLES

KEEP ALL PERFORATED AREAS CLEAR FOR AIRFLOW

1. SPECIFICATIONS SUBJECT TO CHANGE WITHOUT NOTICE.
NOTES: UNLESS OTHERWISE SPECIFIED.

UNLESS OTHERWISE SPECIFIED: DIMENSIONS ARE IN MILLIMETERS (INCHES)		ENGR BY	
TOLERANCES:		DRAWN BY	
X= ±1	XX= ±.25	CHECKED BY	
.X= ±.5	∠= ±1°	USED ON	
DIMENSIONING AND TOLERANCING PER ASME Y14.5M-1994		MATERIAL	
THIRD ANGLE PROJECTION		FINISH	

PLANAR

PLANAR SYSTEMS, INC.
1195 NW COMPTON DRIVE
BEAVERTON, OR 97008 USA

TITLE

**75" ULTRARES TOUCH PANEL
OUTLINE**

SIZE

D

SCALE

1:10

PART NO.

-

DRAWING NO.

-

REV

-

DO NOT SCALE	SHEET	1 OF 1
--------------	-------	--------

THIS DRAWING CONTAINS INFORMATION PROPRIETARY TO PLANAR SYSTEMS, INC. ANY REPRODUCTION IN PART OR WHOLE WITHOUT THE WRITTEN PERMISSION OF PLANAR SYSTEMS IS PROHIBITED. THIS DRAWING IS SUPPLIED FOR INFORMATION, IDENTIFICATION, ENGINEERING, EVALUATION, AND/OR INSPECTION PURPOSES ONLY AND MAY NOT BE USED AS BASIS FOR THE MANUFACTURING OF PRODUCTS OR THE FURNISHING OF SERVICES TO PLANAR SYSTEMS OR TO ANY THIRD PARTY UNLESS AUTHORIZED IN WRITING BY PLANAR SYSTEMS.