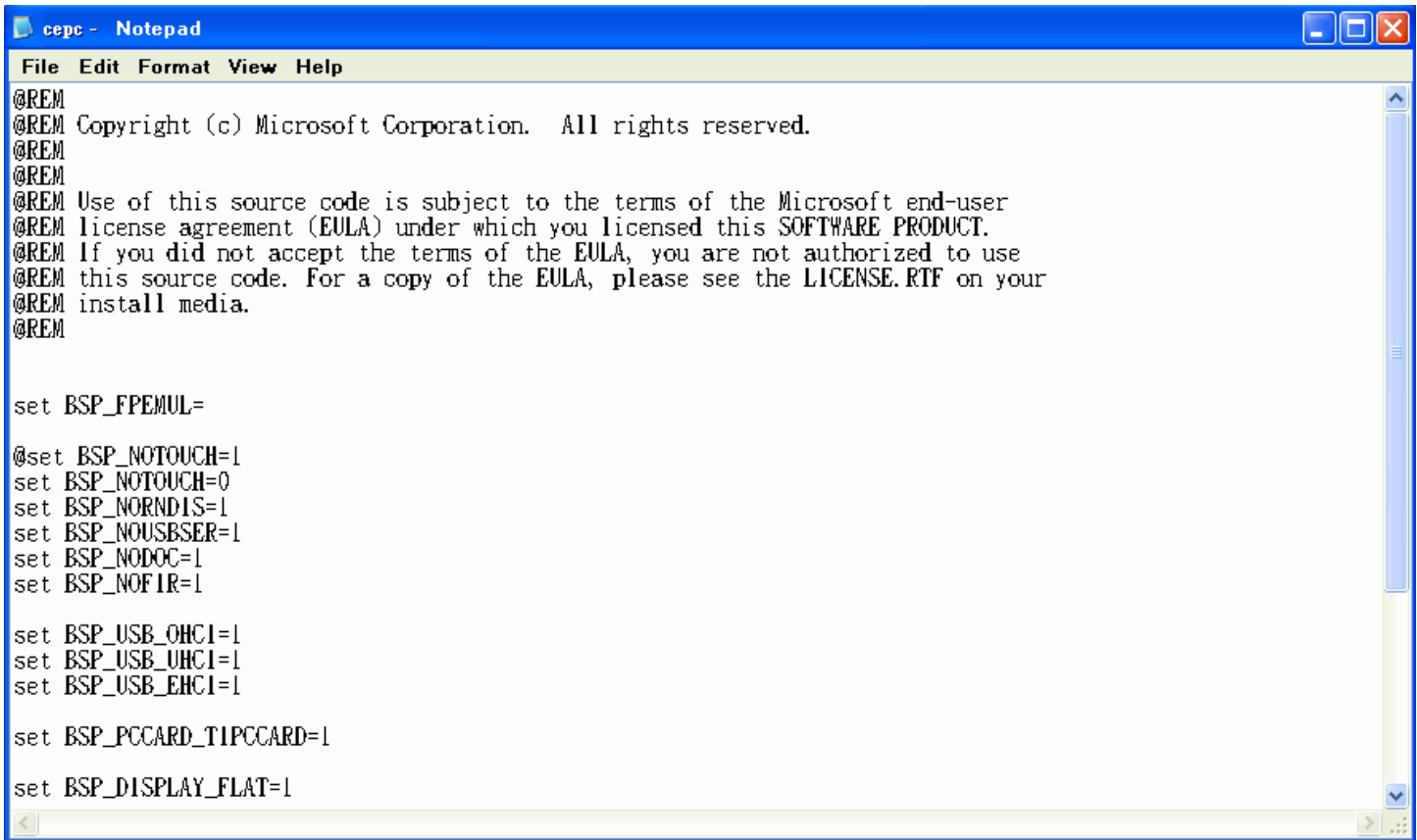


Process of Building Driver for Windows CE 5.0

1. USB-XD, USB-X and ProE-X are compatible with Windows CE 5.0. Please follow the steps below to build up the driver.
2. Add drivers and registry into Win CE platform
 - 2.1. Set the environment variable

Open \WINCE500\PLATFORM\CEPC\CEPC.BAT, and change the value of variable "BSP_NOTOUCH" to "0".



```
cepc - Notepad
File Edit Format View Help
@REM
@REM Copyright (c) Microsoft Corporation. All rights reserved.
@REM
@REM
@REM Use of this source code is subject to the terms of the Microsoft end-user
@REM license agreement (EULA) under which you licensed this SOFTWARE PRODUCT.
@REM If you did not accept the terms of the EULA, you are not authorized to use
@REM this source code. For a copy of the EULA, please see the LICENSE.RTF on your
@REM install media.
@REM

set BSP_FPEMUL=

@set BSP_NOTOUCH=1
set BSP_NOTOUCH=0
set BSP_NORNDIS=1
set BSP_NOUSBSER=1
set BSP_NODOC=1
set BSP_NOFIR=1

set BSP_USB_OHCI=1
set BSP_USB_UHCI=1
set BSP_USB_EHCI=1

set BSP_PCCARD_T1PCCARD=1

set BSP_DISPLAY_FLAT=1
```

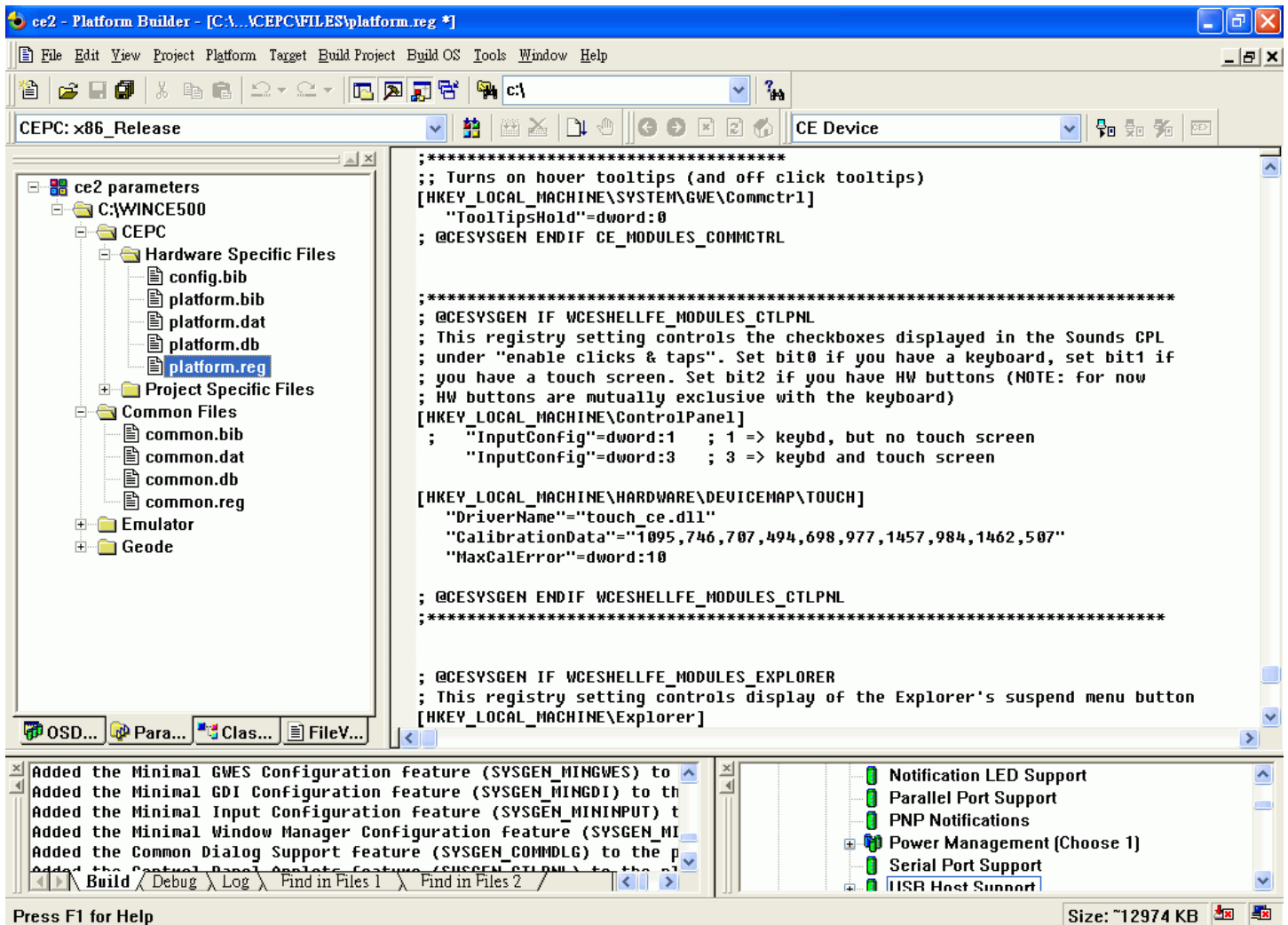
2.2. Add OS Design from Catalog\Device Drivers

- Catalog\Device Drivers\Serial\Com16550
- Catalog\Core OS\Display based devices\Core OS Services\
Serial Port Support
- Catalog\Core OS\Display based devices\Shell and User Interface\
User Interface\Mouse
- Catalog\Core OS\Display based devices\Shell and User Interface\

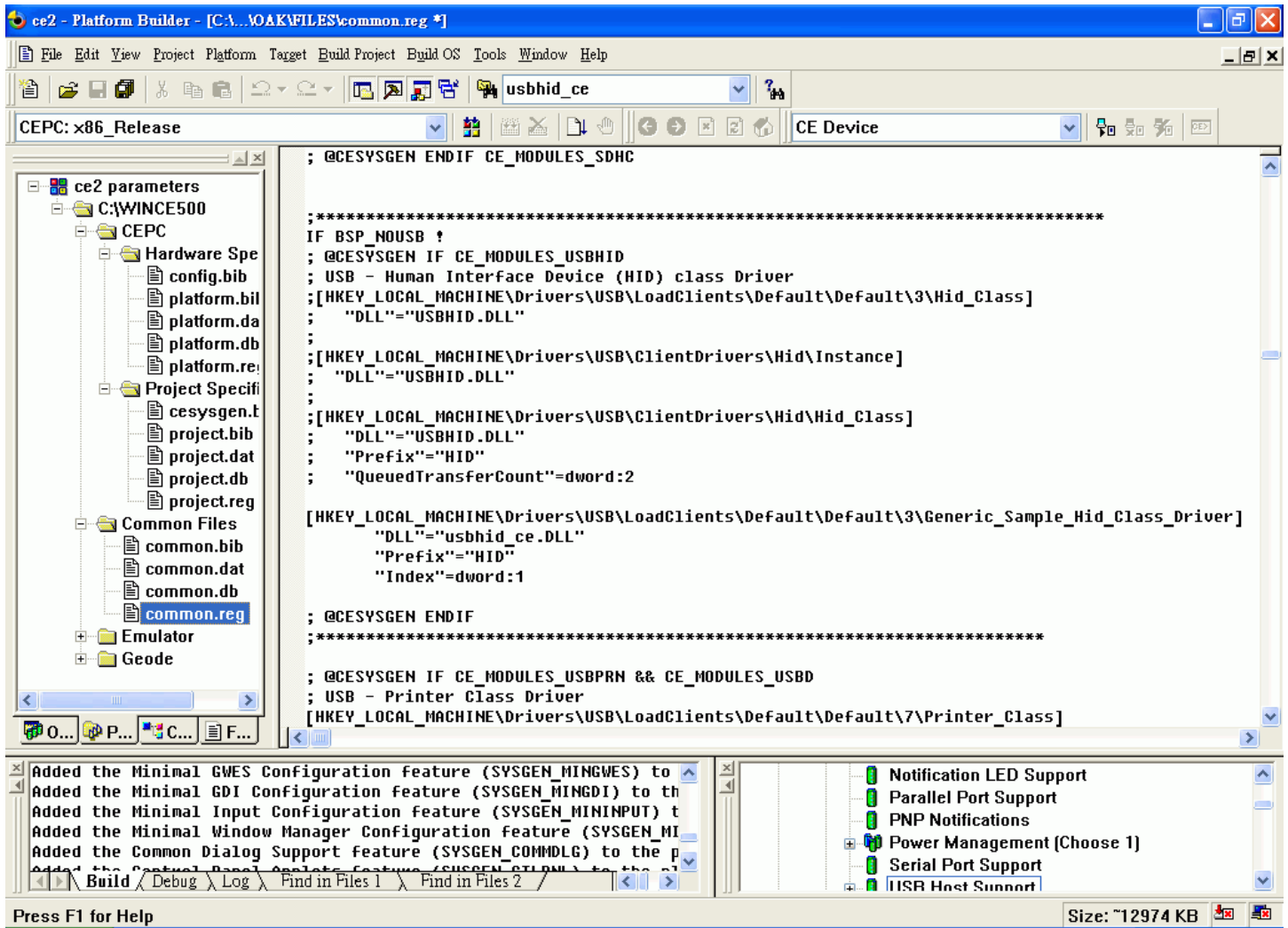
User Interface\Touch Display (Stylus)

- Catalog\Device Drivers\USB Host\USB Host Controllers\EHCI
- Catalog\Core OS\Display based devices\Core OS Services\
USB Host Support\USB Human Input Device (HID) Class Driver

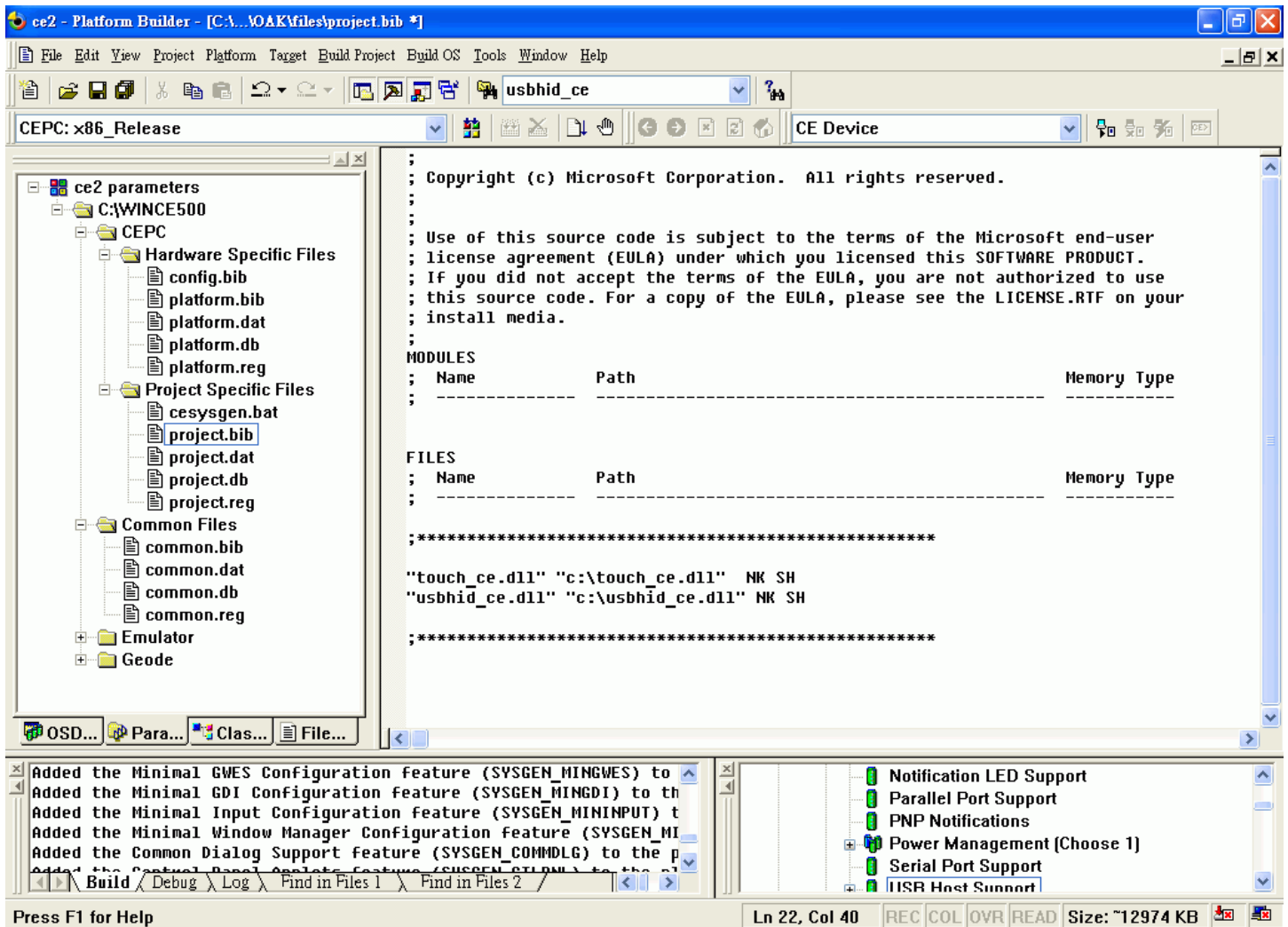
2.3. Edit \WINCE500\CEPC\Hardware Specific Files\platform.reg



2.4. Edit \WINCE500\Common Files\common.reg



2.5. Edit \WINCE500\CEPC\Project Specific Files\project.bib



Note: If c:\usbhid_ce.dll is specified, you will need to put usbhid_ce.dll file into c:\ .

3. Build the System on your OS image. Download the OS image to your CE platform.
4. Plug in touch screen controller (USB-XD or USB-X or ProE-X) and Startup your CE platform.
5. Click \Control Panel\Stylus to calibrate the screen.