

Quick Installation Guide

RFID Reader for ET7001L IDS Touchmonitor

Elo Touch Solutions Technical Support

Online self-help: www.elotouch.com/go/websupport

Technical Support contacts in your region:

www.elotouch.com/go/contactsupport

Revision A
P/N E608052

North America

Elo Touch Solutions
1033 McCarthy Boulevard
Milpitas, CA 95035

800-ELO-TOUCH

Tel +1 408 597 8000

Fax +1 408 597 8050

customerservice@elotouch.com

Europe

Tel +32 (0)16 70 45 00

Fax +32 (0)16 70 45 49

elosales@elotouch.com

Asia-Pacific

Tel +86 (21) 6106 7162

Fax +86 (21) 6485 3981

www.elotouch.cn

Latin America

Tel 786-923-0251

Fax 305-931-0124

www.elotouch.com



The information in this document is subject to change without notice. Elo Touch Solutions, Inc. and its Affiliates (collectively "Elo") makes no representations or warranties with respect to the contents herein, and specifically disclaims any implied warranties of merchantability or fitness for a particular purpose. Elo reserves the right to revise this publication and to make changes from time to time in the content hereof without obligation of Elo to notify any person of such revisions or changes.

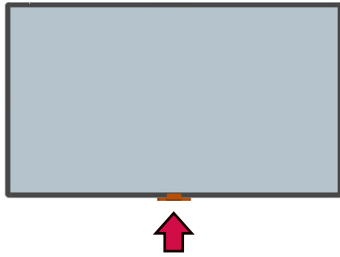
No part of this publication may be reproduced, transmitted, transcribed, stored in a retrieval system, or translated into any language or computer language, in any form or by any means, including, but not limited to, electronic, magnetic, optical, chemical, manual, or otherwise without prior written permission of Elo Touch Solutions, Inc.

Elo (logo) and Elo Touch Solutions are trademarks of Elo and its Affiliates.

Installation

Disconnect power to the monitor before installing this device.

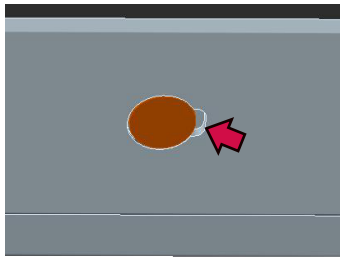
- 1 The RFID Reader can be attached to any of the 4 sides of the touchmonitor. Elo suggests the bottom side for ease of use.



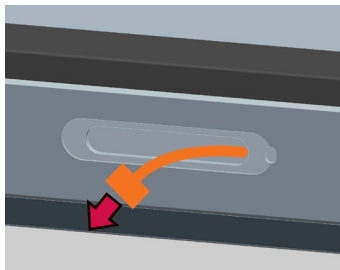
- 2 Locate the peripheral mounting hole covers on the side of the monitor where you plan to install the RFID reader



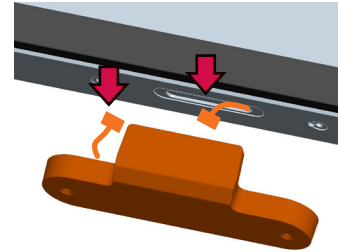
- 3 Carefully insert a small flathead screwdriver under the open edge of the cover and peel the cover up. Repeat for all three covers being careful not to scratch the paint



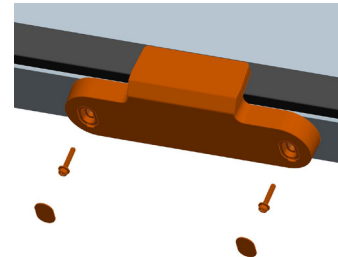
- 4 Locate the peripheral cable connector under the center cover and pull it out of the hole with a small screw driver.



- 5 Connect the RFID reader power cable to the connector in the center peripheral hole.



- 6 Fasten the reader module to the monitor using the two M3 screws and screw covers supplied in the kit.



- 7 Install the RFID software driver. The RFID driver software is available on the touchmonitor user manual CD in the \RFID\ directory. The file name is:



CP210x_VCP_Win_XP_S2K3_Vista_7.exe

or it can be download from:

<http://www.elotouch.com/support>

- 8 Connect the touch USB cable from the IDS Display to the computer. The RFID reader communicates with the computer over the touch USB cable. No other connections are required.

