



Model 6030

Portion Control Scale



User Instructions

Brecknell is part of Avery Weigh-Tronix. Avery Weigh-Tronix is a trademark of the Illinois Tool Works group of companies whose ultimate parent company is Illinois Tool Works Inc ("Illinois Tool Works"). Copyright © 2016 Illinois Tool Works. All rights reserved.

No part of this publication may be reproduced by making a facsimile copy, by the making of a copy in three dimensions of a two-dimensional work and the making of a copy in two dimensions of a three-dimensional work, stored in any medium by electronic means, or transmitted in any form or by any means, including electronic, mechanical, broadcasting, recording or otherwise without the prior written consent of the copyright owner, under license, or as permitted by law.

This publication was correct at the time of going to print, however Avery Weigh-Tronix reserves the right to alter without notice the specification, design, price or conditions of supply of any product or service at any time.

Table of Contents

Chapter 1 General Information and Warnings	5
About this Manual	5
Text Conventions	5
Special Messages	5
Safety Guide	5
Safe Handling of Equipment with Batteries	6
Routine Maintenance	6
Training	6
Sharp Objects	6
Chapter 2 Introduction	7
Specifications	7
Installing the Battery	7
Front Panel	9
Display and Keys	9
Scale Keys	9
LCD Symbol Descriptions	10
Chapter 3 Operation	11
Simple Weighing	11
Tare Function	11
Unit Key Function	11
Set Auto-off Time	12
Calibration Procedure	12

1 General Information and Warnings

1.1 About this Manual

This manual is divided into chapters by the chapter number and the large text at the top of a page. Subsections are labeled as shown by the 1 and 1.1 headings shown above. The names of the chapter and the next subsection level appear at the top of alternating pages of the manual to remind you of where you are in the manual. The manual name and page numbers appear at the bottom of the pages.

1.1.1 Text Conventions

Key names are shown in **bold** and reflect the case of the key being described. This applies to hard keys and on screen or soft keys.

Displayed messages appear in ***bold italic*** type and reflect the case of the displayed message.

1.1.2 Special Messages

Examples of special messages you will see in this manual are defined below. The signal words have specific meanings to alert you to additional information or the relative level of hazard.



CAUTION!

This is a Caution symbol.

Cautions give information about procedures that, if not observed, could result in damage to equipment or corruption to and loss of data.



NOTE: *This is a Note symbol. Notes give additional and important information, hints and tips that help you to use your product.*

1.2 Safety Guide

For the best performance and precise measurement

- Do NOT overload the scale. This will damage the loadcell and void the warranty.
- Do NOT leave a load on the scale when not in use. This will decrease the scale's accuracy and shorten the loadcell life.
- Do NOT attempt to repair the scale yourself. Contact your local representative.

1.3 Safe Handling of Equipment with Batteries



CAUTION: *Danger of explosion if battery is incorrectly replaced. Replace only with the same or equivalent type recommended by the manufacturer. Dispose of used batteries according to the manufacturer's instructions.*

ATTENTION: *Il y a danger d'explosion s'il y a remplacement incorrect de la batterie, remplacer uniquement avec une batterie du même type ou d'un type équivalent recommandé par le constructeur. Mettre au rebut les batteries usagées conformément aux instructions du fabricant.*

1.4 Routine Maintenance



IMPORTANT: *This equipment must be routinely checked for proper operation and calibration. Application and usage will determine the frequency of calibration required for safe operation.*

1.5 Training

Do not attempt to operate or complete any procedure on a machine unless you have received the appropriate training.

To avoid the risk of RSI (Repetitive Strain Injury), place the machine on a surface which is ergonomically satisfactory to the user. Take frequent breaks during prolonged usage.

1.6 Sharp Objects

Do not use sharp objects such as screwdrivers or long fingernails to operate the keys.

2 Introduction

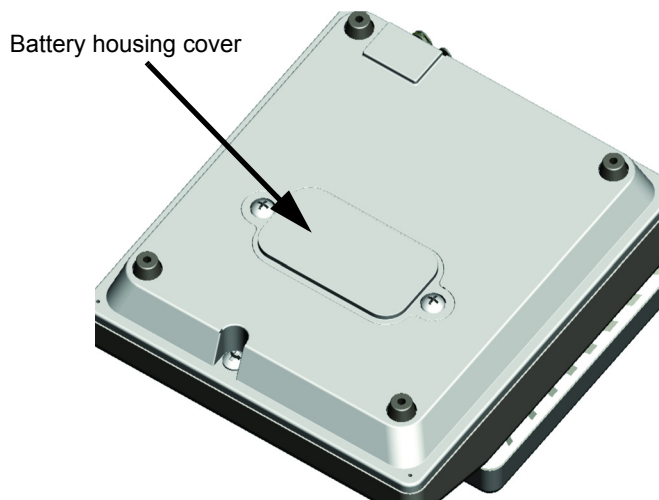
2.1 Specifications

Model	6030
Capacity	5000g x 1g
Weigh Units	g, lb, lb/oz, ounce
Dimensions	170 mm x 150 mm x 46.5 mm (7 in x 6 in x 2 in)
Platform Size	120 mm x 150 mm (4.75 in x 6 in)
Display	0.8 inch LCD display
Keys	UNIT, ON/OFF, TARE/ZERO
Weight	Net weight: 0.85 kg Gross weight: 1.0 kg
Power	9V alkaline battery 9V adapter (male type) <not supplied with scale>
Temperature Range	5°C up to +35°C

Note: The scale is IP67 if used with battery option only and a grommet over the DC jack.

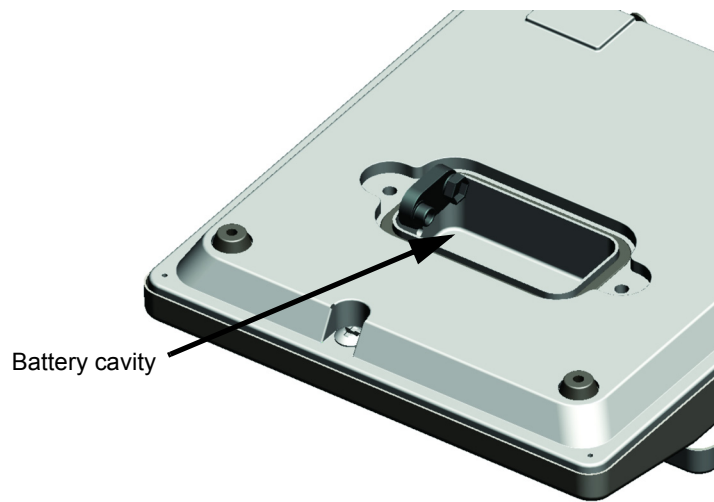
2.2 Installing the Battery

1. Turn the scale over to find the battery housing cover.



Note: The clear plastic overlay is used for sanitary purposes in food applications; not for IP67 rating.

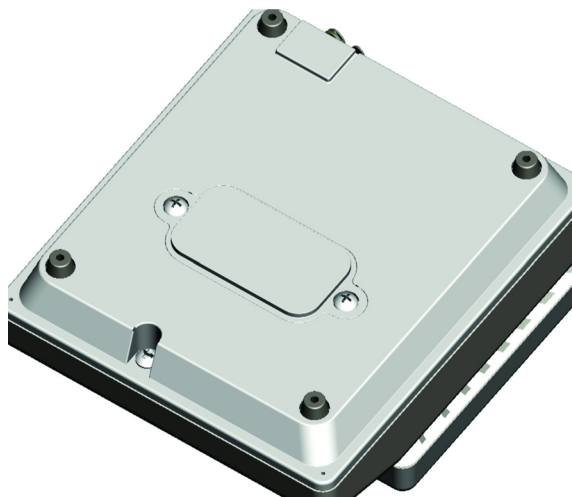
2. Remove the two screws holding on the battery cover exposing the battery cavity.



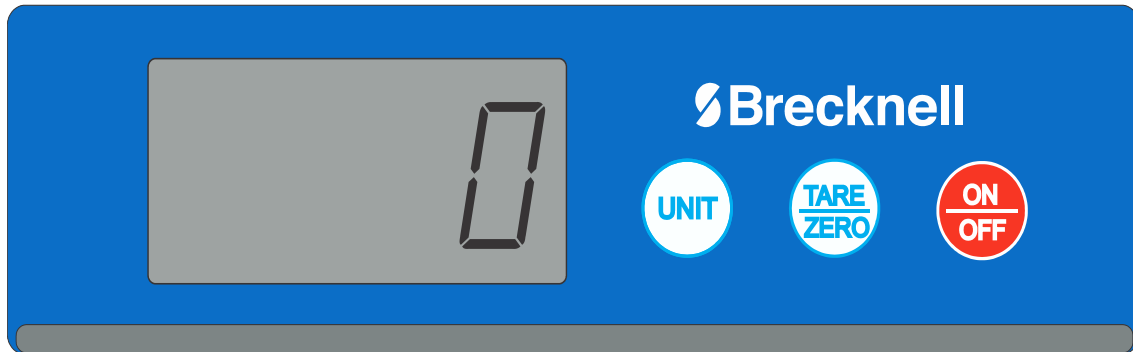
3. Install the 9V alkaline battery



4. Reinstall the battery housing cover.






2.3 Front Panel

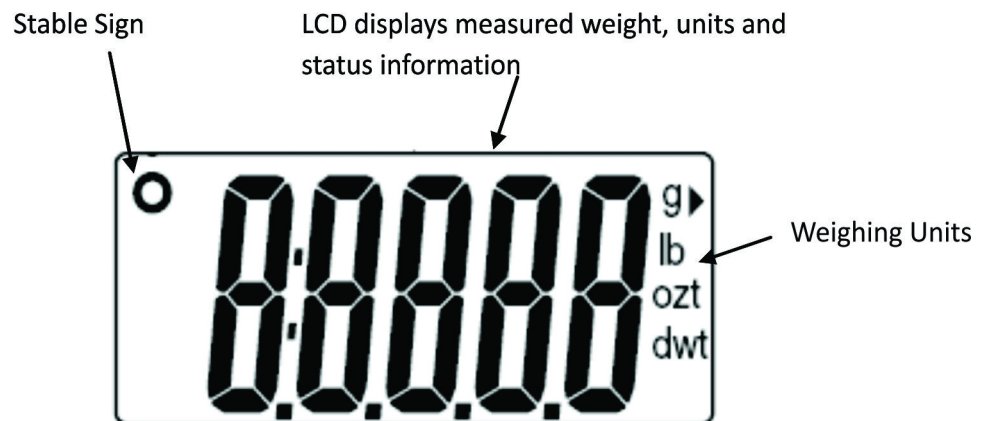


2.4 Display and Keys

2.4.1 Scale Keys

Keys	Key Name	Function
	ON/OFF	Turn the scale ON or OFF
	TARE/ZERO	Tare an unwanted weight during the weighing process
	UNIT	Select the weighing unit

2.4.2 LCD Symbol Descriptions



3 Operation

This section covers the various scale operations, such as simple weighing, tare, unit switching and Auto-off feature.

3.1 Simple Weighing

1. Turn on the scale by pressing the **ON/OFF** key.
2. The display will count down from 88888 and will automatically display zero (weighing mode).
3. Place the item in the middle of the scale. Wait until the scale stabilizes and stable annunciator illuminates on the display.



NOTE: The scale will automatically zero when turned on. If a value is displayed when the platform is empty, press TARE to zero the display.



NOTE: If an Item is heavier than the scale capacity, the display will show the "Err" prompt (= overload).

3.2 Tare Function

Tare allows the user to zero the instrument to cancel the weight of a container from the reading of the instrument, thus giving the true weight of the product being tested.

1. Turn on the scale by pressing the **ON/OFF** key.
2. When **0** is displayed, place the object to be tared on the scale platform.
3. Press the **TARE/ZERO** key after the weight stabilizes and stable annunciator appears on the display.

The display will return to **0**.

4. Place the item to be weighed (without removing the tare object) on the scale. The weighing result is the Net weight of the item.

To delete the saved tare value, remove the tare object from the scale platform and press **TARE/ZERO** key.

3.3 Unit Key Function

Press the **UNIT** key to switch from one weighing unit to another.

3.4 Set Auto-off Time

The Model 6030 has an Auto-Off time option, which enables the scale to turn off automatically when the scale is not in use. The time duration for auto-off can be selected in the following way:

1. Turn on the scale by pressing the **ON/OFF** key.
2. Press the **ZERO** key for 3 seconds after the count down stops and LCD displays zero.

SET P-13 and then **A.off** will be displayed.

3. Press the **TARE** key. The default auto-off time will be displayed.
4. Press the **UNIT** key to select the Auto-off time.

The Auto-off time can be set to 120/180/240/300 seconds.

5. To confirm press the **TARE** key again. For Example- If you want to select 240 seconds, press the TARE key when '**240 S**' is displayed.
6. Press the **UNIT** key.

End is displayed.

7. Press the **TARE** key to confirm.

Or

Auto-off option can be turned off.

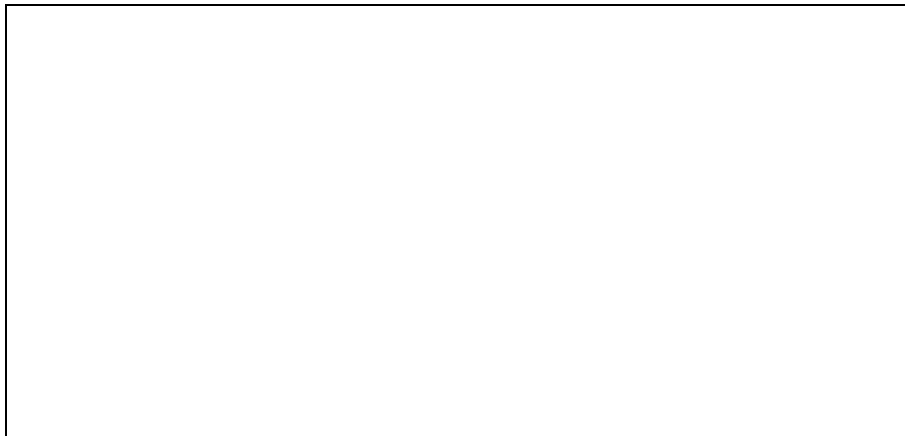


NOTE: The AUTO-OFF option only works when the scale is using battery power. If the scale is using an Adaptor, AUTO-OFF will be disabled automatically.

3.5 Calibration Procedure

Required Test Weight is 5000gram /10lbs Span range 4000-80000.

1. Turn the scale off.
2. Press the **ON/OFF** button and hold it; as the 8888's on display, press the **UNIT** button 3 times quickly and release all keys.
3. You should have a raw counts zero number value. (136334-142166)
4. Press the **UNIT** button to select the unit of weight for this calibration.
5. With no load on the scale, press the **ZERO** button, the display will show 0
6. Put the calibration weight on the scale (either 5000grams or 10lbs)
7. Press the **ZERO** button, the display will show Cal then your test weight value.
8. The scale will return you to the normal weighing mode.



Brecknell

Brecknell

1000 Armstrong Dr., Fairmont, MN 56031
Toll free: 800-637-0529, Tel: 507-238-8702
Fax: 507-238-8271
Email: sales@brecknellscales.com
www.brecknellscales.com

Brecknell

Foundry Lane
Smethwick, West Midlands B66 2LP
Tel: +44 (0) 845 246 6717
Fax: +44 (0) 845 246 6718
Email: sales@brecknellscales.co.uk
www.brecknellscales.co.uk