

User's Manual

Installation Instructions



KEYTEC, INC.

Revision M-070104

CONTENTS:

A. Touch Screen Panel and Touch Monitor Installation

1. Introduction.
2. Parts list.
3. Magic Touch Add-On Kits (KTMT series) mounting.
4. Magic Touch Monitor (KTSC, KTLC series) connection.
5. Magic Touch Built-In Kits (KTT series) integration.

B. Controller and Driver Installation

6. USB-X controller (Win XP, 2000, ME, 98, Mac 9-10, Linux.)
7. ProE-X controller (Win XP, 2000, ME, 98, 95, NT 4.0, Linux.)

Note: Not all the drivers are included. Linux driver installation procedures are in the readme file on the CD.

8. Settings and Options
9. Touch Screen Functions

C. Important Information

10. Helpful Notes
11. How to take care of your Magic Touch products.
12. Troubleshooting & Technical Support.
13. Warranty information & Return Policy

FCC COMPLIANCE

This equipment has been listed and found to comply with the limits for a Class B digital device, pursuant to Part 15, Subpart B of FCC Rules. This equipment generates, uses, and can radiate radio frequency energy. If not installed and used in accordance with the instructions, it may cause interference to radio communications. The limits are designed to provide reasonable protection against such interference in a residential situation. There is no guarantee that interference will not occur in a particular installation.

DISCLAIMER

The material in this document is for an informational purpose and is subject to change without notice. The manufacturer assumes no responsibility for errors or omissions in this document. Nor are any liability assumed for any damages from the use of this product and the information contained in this document. All mentioned product names herein are registered trademarks of the respective companies.

All rights reserved. No part of this document and the software provided with the product may be reproduced or modified without permission of the manufacturer.

A. Touch Screen Panel and Touch Monitor Installation

1. Introduction: Please identify the model of Magic Touch that you have purchased. Check all the parts in the package against the following parts list. Follow the installation instruction only for the specific model of yours.

NOTE: Please read the instructions carefully. **Improper installation may cause permanent damages, which may not be covered by the warranty.**

2. Parts List:

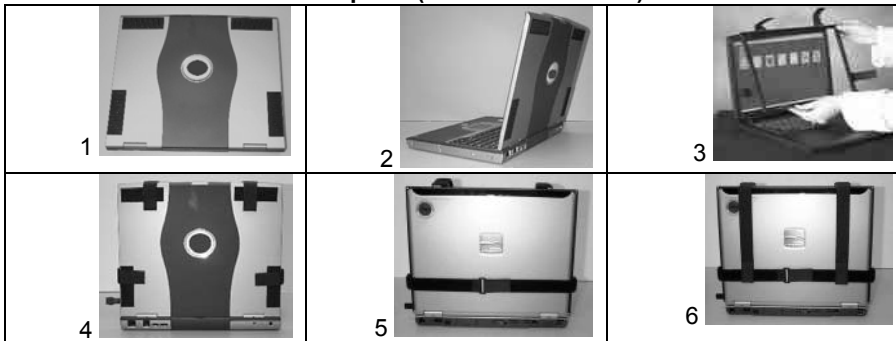
	Add-On (KTMT)	Touch Monitor (KTSC/KTLC)	Built-In (KTT)
External touch screen	1	0	0
Hangers & accessories* (set)	1	0	0
Integrated touch monitor	0	1	0
Internal touch screen	0	0	1
Magic pen (stylus)	1	1	1
Cleaning cloth	1	1	1
User's manual	1	1	1
Installation CD	1	1	1
Warranty card	1	1	1
Controller box **	1	1	1

* Notebook models (KTMT-1214 & KTMT-1500) do not have hangers.

** Controller is either USB-X (for USB port) or ProE-X (for com port).

3. Magic Touch Add-On Kits (KTMT series) mounting:

3.1. KTMT for notebook computer (KTMT-1214 & 1500):



3.1.1. Adhere the 4 Velcro strips to the cover of the computer as shown (picture 1), then open the cover (picture 2).

3.1.2. Remove the protective film on the touch screen and mount the touch screen to the notebook using the Velcro straps as shown (picture 3 and 4).

3.1.3. If you have received a newer model with long Velcro Straps. Just buckle the horizontal straps to the back of the notebook (picture 5) and pull the two vertical straps down and adhere them to the horizontal strap.

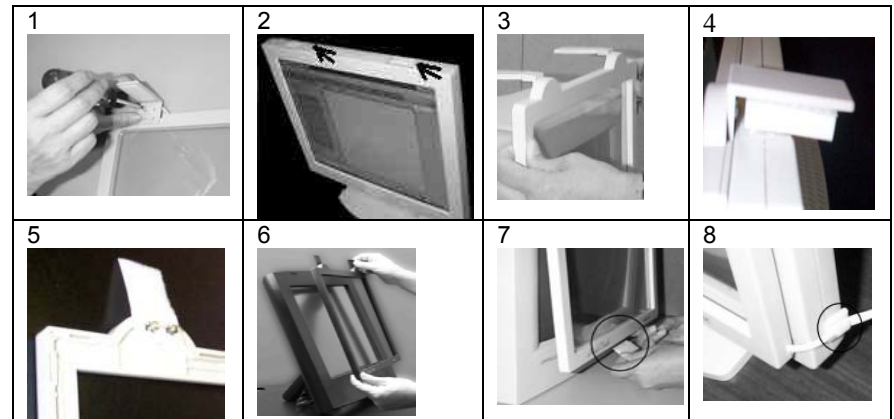
3.1.4. Continue to **B. Controller & Driver Installation.**

3.2. KTMT for monitors (KTMT-1315, 1700, 1921):

KTMT-1315 for 13-15" CRT and 14-15" LCD. KTMT-1700 for 17" CRT & LCD.

KTMT-1921 for 19-21" CRT and 19-20" LCD.

3.2.1. For Mounting on LCD monitor: There are two sets of hangers included; one pair of plastic hangers and one pair of Velcro hangers.



3.2.1.1. You may use the plastic hangers. Place the touch screen panel on a flat table with the backside facing up. Screw two hangers into the back of the panel using the top screw holes on the hanger (picture 1).

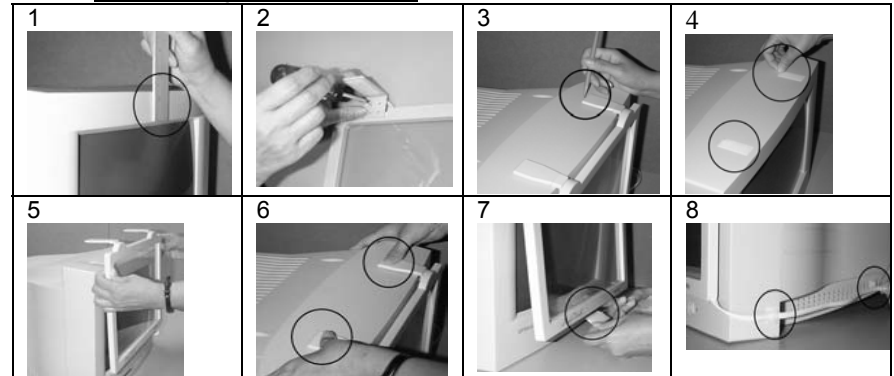
3.2.1.2. Adhere two Velcro strips provided on the top of the display as indicated by the arrows in picture 2. Mount the touch screen to the display (picture 3).

3.2.1.3. If you find the top of the touch screen is blocking the view area of the display; you may raise the touch screen by adding the rectangular foam pad underneath the hangers (picture 4).

3.2.1.4. Alternatively, you may use the Velcro hangers (picture 5). The soft surface of the Velcro faces up when fastening them with the screws to the frame. Mount the touch screen to the display and press the Velcro firmly (picture 6).

3.2.1.5. You must also apply the Velcro at the bottom of the screen (picture 7) to secure the mounting. Use the cable clips provided to secure and organize the touch screen cable (picture 8).

3.2.2. For mounting on CRT monitor:



3.2.2.1. Measure the top frame of the monitor (picture 1). If it is 1.5 inches (3.8 cm) or less, use the top holes on the plastic hangers to screw into the touch screen panel. Otherwise, use the bottom holes.

3.2.2.2. Place the touch screen panel on a flat table with the backside facing up. Screw two hangers into the back of the panel (picture 2).

3.2.2.3. Hang the touch screen onto the monitor in center position. Use a pencil to mark the hangers' position on top of the monitor (picture 3).

3.2.2.4. Remove the touch screen from the monitor. Adhere two pieces of Velcro

- strips (provided) onto the top of the monitor near the pencil marks (picture 4).
- 3.2.2.5.** Mount the touch screen panel as close to the monitor as possible with the hangers aligned to the Velcro strips (picture 5).
- 3.2.2.6.** Press down the hangers firmly to fasten the Velcro strips (picture 6).
- 3.2.2.7.** Adhere the Velcro at the bottom center of the screen (picture 7).
- 3.2.2.8.** Adhere the 3 cable clips to the side of the monitor to organize and secure the cable. This can also prevent the screen from dropping down to the ground directly if it gets knocked off of the monitor (picture 8).

IT IS VERY IMPORTANT TO FOLLOW THE ABOVE PROCEDURES TO AVOID ACCIDENTAL DAMAGE TO THE PRODUCT.

Continue to section B. Controller & Driver Installation.

4. Magic Touch Monitor (KTSC & KTLC series) connection:

- 4.1.** The monitor should be connected to the computer as instructed in the monitor's manual, which typically involves the power cord and video cable connection. Ignore any contents about touch screen in the monitor's manual.
- 4.2.** Connect the touch screen cable from the back of the monitor to the controller.
- Note:** If the cable is not long enough, contact KEYTEC for a custom extension cable. **Regular telephone cable cannot be used for extension.**

Continue to section B. Controller & Driver Installation.

5. Magic Touch Built-In Kit (KTT series) integration:

The built-in kits must be integrated by experienced technician. The integrator will be solely responsible for any potential damage to the monitor and touch screen kit. Physical damage on the touch screen is **not covered by the warranty.** For all standard LAM and CAF1 models, **the flex tail should be on left side and its alignment mark should match to the one on the connector of extension cable.**






It is impossible to provide a general guideline for integration because different monitor models may have different housing design and wiring connections. The following procedures should be used **for reference purpose only:**

- 5.1. Important:** Test both touch screen panel and monitor before the installation.
- 5.2.** Open and remove the housing of the monitor.
- 5.3.** Clean the monitor surface and the back of the touch screen panel (remove the protective film of touch screen).
- 5.4.** It is **very important** to center the touch screen panel to the opening of the monitor's front frame, so that the edges of the frame will not get into the **active area** of the touch screen to prevent shorts caused by constant touching (pre load). The edges of the frame should rest on the **clear insulation border** of the touch screen. Depending on the structure of the frame, foam strips and washers may be needed to add space for preventing shorts.
- 5.5.** If the monitor does not have enough space to accommodate the thickness of the touch screen, do not force the housing to close because it may damage both the touch screen and monitor. Do not force the mounting screws beyond finger tightness. Note: Slim type LCD and notebook computer usually are not suitable for touch screen integration.
- 5.6.** Pull the touch screen cable out from the back of the monitor. Replace the connector if necessary – make sure the wiring is correct. **Note:** If the cable is not long enough, contact KEYTEC for a custom extension cable. **Regular telephone cable cannot be used for extension.**

Continue to section B. Controller & Driver Installation.

B. Controller and Driver Installation

There are two types of controller – USB-X & ProE-X as labeled on the controller.

	<p>The USB-X controller should be plugged into the USB port as instructed by the following driver installation steps</p>		<p>The ProE-X controller should be plugged into the serial port (com1 or 2) when the computer is powered off.</p>
			
<p>For notebook add-on: connect the curly cable to touch screen with white dots aligned.</p>	<p>Connect the controller to computer.</p>	<p>Plug the touch screen cable into the controller box.</p>	

6. USB-X controller (for Win XP, 2000, ME, 98, Mac 9-10, Linux.)

USB-X controller is a newer version upgraded from the original USB controller. This driver can be used on old model USB controller too. If there is a previous Magic Touch driver or other touch screen drivers installed in your system, **you must uninstall them first.**

All **Windows and Linux drivers** are included on one CD, and can be downloaded at www.magictouch.com/support_usb_x.html. Mac driver CD is included only if you have ordered Mac version (USB-M or USB-WM). **Mac user:** please see Sec. 6.2. for instructions **Linux user:** please see readme file for setup instructions.

- 6.1. For Windows:** (Must logon with administrator's password for Win XP/2000)
- 6.1.1. Insert the setup CD. The setup window will display on the desktop. Click to select USB controller. Then click Install.
- Note:** If setup window does not open, the CD Rom's autorun may be disabled. You may click Windows START button and RUN the setup from the driver CD.
- 6.1.2. For **Win XP & 2000:** When the system prompts for "**please plug in the Magic Touch USB to USB port**", **plug in the controller.** After Windows has found the new hardware, click OK to continue.
- 6.1.3. When "**must reboot Windows to complete the installation**" shows, click OK to reboot. (For **Win 98 & ME**, **plug in the controller after reboot.**)
- 6.1.4. After Windows is rebooted, two new icons are created on desktop.



- 6.1.5. Double click Touch USB icon to open touch control panel.
- 6.1.6. Click the calibration button to open the calibration screen. It's a 4-point calibration: touch the center of each circle to complete the calibration.
- 6.1.7. Repeat the calibration if necessary. Click OK to close the window.
- 6.1.8. See **8. Settings and Options.**

For using with MULTI-MONITOR applications (Win XP & 2000)

Please download the driver from www.magictouch.com/support_usb_x.html, see readme file for installation instruction. See **8. Settings and Options.**

6.2. For Macintosh with USB port

Plug in the controller to USB port and plug in the touch screen cable to controller.

- 6.2.1. Insert the installer CD. Double click to open the Magic Touch CD icon.
- 6.2.2. There are 4 folders for OS 9.2.x, 10.1.x, 10.2.x, 10.3.x and a readme file.
- 6.2.3. Select and open the folder that matches to the OS of your computer.
- 6.2.4. Double click MagicTouch.mpkg to run installation. If a LOCK icon appears on the lower-left corner, click and key in the administrator's password.
- 6.2.5. After installation is completed, restart the computer.
- 6.2.6. Calibrate the screen: For OS 10.x, run HardDrive\Application\Magic Touch Utility. For OS 9.x, run Apple\Control Panel\Magic Touch Utility\Magic Touch. Touch the centers of the 3 crosshairs with stylus provided (for better accuracy) to complete the calibration. Check the accuracy, repeat the calibration if necessary.

7. ProE-X Controller (for Win XP, 2000, ME, 98, 95, NT4.0 and Linux.)

ProE-X controller is a newer version upgraded from the original ProE controller. This driver can be used on old model ProE controller too. If there is a previous Magic Touch driver or other touch screen drivers installed in your system, **you must uninstall them first**.

All Windows and Linux drivers are included on one CD, and can be downloaded at www.magictouch.com/support_proe_x.html. **NT 4.0 & Linux user:** please see readme file for setup instructions.

Note: MUST logon with administrator's password for Win XP & 2000 & NT 4.0.

- 7.1. Insert the setup CD. The setup window will display on the desktop. Click to select ProE controller. Then click Install.
Note: If setup window does not open, the CD Rom's autorun may be disabled. You may click Windows START button and RUN the setup from the driver CD.
- 7.2. When "must reboot Windows to complete the installation" shows, **plug in the ProE controller to a "free" Com port**, click OK to reboot. Free Com port means there is no other device configured to use this Com port.
- 7.3. After Windows is rebooted, two new icons are created on desktop.



Touch 232



Swap Button

- 7.4. Double click Touch232 to open touch control panel.
- 7.5. Click the calibration button to open the calibration screen. Use the stylus (for better accuracy) to touch the centers of 4 circles to complete the calibration. Repeat the calibration if necessary. Click OK to close the window.

8. Settings and Options of Magic Touch Control Panel:

- 8.1. **Mouse speed:** Control the tracking speed of mouse cursor.
- 8.2. **Double click speed:** Control the time interval between two clicks to activate a double click. Slow speed makes double click easier. Test the double click by tapping the K logo twice. If successful, the logo rotates.
- 8.3. **Lift Off:** When this option is enabled, the click is activated when touch is lifted away from the touch screen. **This mode is very useful for clicking hyperlinks, such as Internet browser, or programs that use "mouse-over" function.** However, it is impossible to drag or draw in this mode.
- 8.4. **Beep:** Enable/disable an audio beep when touching the touch screen.
- 8.5. **Move only:** This option is for those who have an optional **click pen**. Touching and dragging on the touch screen only moves the mouse cursor without performing a click. The button on the click pen controls the clicking function.

- 8.6. **Hide cursor:** Makes the cursor invisible (preferred for some applications).
- 8.7. **Uninstall:** Click to uninstall the driver. Correct password needed. (magictouch is the default password).
- 8.8. **Default setting:** Return the speeds and options to the original settings.

9. Touch screen functions:

- 9.1. Screen touched = left mouse button clicked
- 9.2. Touch down and drag = left mouse button held down and dragged
- 9.3. Tap twice = left mouse button double clicked
- 9.4. Swap Button: swap between left/right mouse buttons momentarily

Above-mentioned functions are for Windows. Mac has only one mouse button function – click and drag.

C. Important Information

10. Helpful Notes:

- 10.1. Place the monitor at an easy-to-touch position and avoid direct strong lighting to reduce glare on the screen.
- 10.2. It is easier to use the stylus for clicking smaller icons, dragging and drawing (apply constant pressure when drawing).
- 10.3. Make one-point touch only. Do not lean your hand on the screen or touch it with more than one finger or stylus.
- 10.4. Increase the size of icon and menu bar for easy touch.
- 10.5. Set 'click items' as single-click – if you find double click difficult.

11. How to take care of your Magic Touch product:

- 11.1. **DO NOT** touch the screen with hard, sharp objects.
- 11.2. **DO NOT** hit or drop the screen.
- 11.3. **DO NOT** spray any liquid directly to the screen. Clean the screen with soft cloth or paper towel dampened with cleaning solution, such as Windex, alcohol.
- 11.4. **DO NOT** alter or substitute any parts.
- 11.5. Put the screen into the original packaging for storage and transportation.

Failure to handle and use this product properly will negate the warranty.

12. Troubleshooting & technical support:

Troubleshooting guide is on the setup diskette (except for Mac version) and also available at www.magictouch.com/troubleshooting/main.html. Request support on-line at www.magictouch.com/techsupport.html or send e-mail to tech@magictouch.com. You should include the information about Magic Touch model, driver version installed, your operating system and the nature of the problems encountered. You may also call 972-234-8617 (9-5/ M-F Central Time) or contact your local authorized dealer for assistance.

13. Warranty Information & Return Policy:

Warranty information is on the setup diskette and also available at www.magictouch.com/warranty.html. Register to activate your warranty. on-line at www.magictouch.com/registration.html or mail in the registration card. If you need to return the product, you must first contact KEYTEC'S tech support & RMA department to get return authorization number (RMA#). Email to tech@magictouch.com or call 972-234-8617. The product must be packed with sufficient protection and insured to full value and shipped with freight prepaid. **If the product is purchased from KEYTEC'S dealer, please check with your dealer directly about their return policy.**